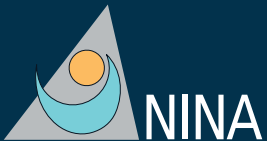


Norwegian Institute for Nature Research

# Annual Report 2024



Cooperation and expertise for a sustainable future

# Norwegian Institute for Nature Research (NINA)

# Cooperation and expertise for a sustainable future

*NINA contributes to sustainable societal development by delivering research-based and relevant knowledge on biodiversity, climate and society. Our prioritized goals for the period 2020-2024 are:*

**NINA's work shall have high scientific quality and integrity.**

**NINA shall contribute to sustainable societal development.**

**NINA shall be visible and innovative in its knowledge dissemination.**

**NINA shall be an attractive and efficient knowledge enterprise.**

*NINA's slogan is:*

«Cooperation and expertise for a sustainable future»

**The Norwegian Institute for Nature Research, NINA**, is an independent foundation that conducts research on nature and the interaction between nature and society. NINA was established in 1988. The headquarters are located in Trondheim, with branch offices in Tromsø, Lillehammer, Bergen, and Oslo. In addition, NINA operates the Sæterfjellet breeding station for Arctic foxes in Oppdal, and a gene bank and research station for wild salmonids in lms, Rogaland.

NINA is recognized nationally and internationally for its socially relevant nature research. Our work has high scientific quality and integrity, and we provide knowledge for use in policy, management, and value creation. In this way, we contribute to sustainable decision-making in society.

Our work includes both research and assessment, environmental monitoring, advisory services, and evaluation. These are our research areas:

- Freshwater ecology
- Salmonids
- Coastal ecology and seabirds
- Renewable energy
- Terrestrial ecology
- Pollination and entomology
- Deer and reindeer

- Carnivores and society
- Nature restoration and nature-based solutions
- Urban ecology and natural capital
- Ecological condition and nature indexes
- Method development, mapping, and big data
- Social research

Active dialogue and communication are prerequisites for our work at NINA.

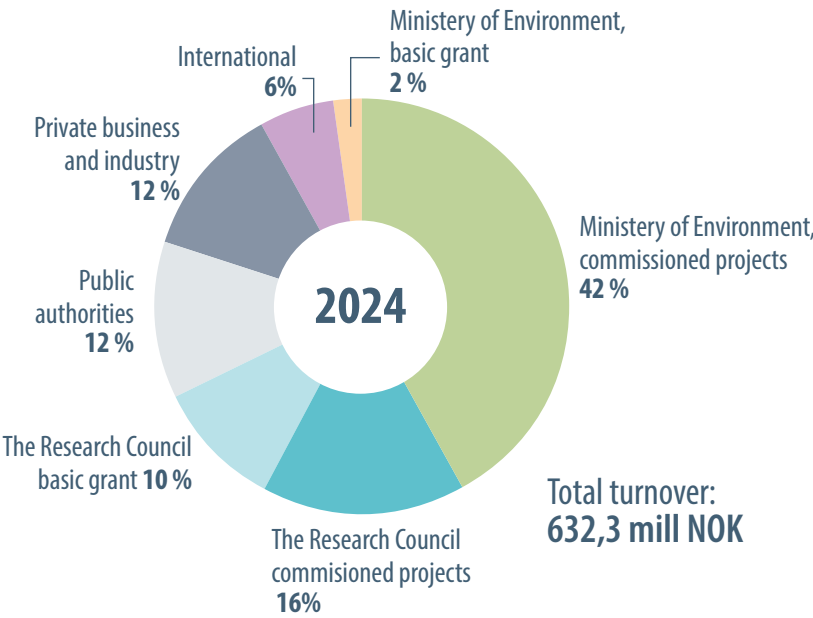
NINA participates in research collaborations such as CIENS (Centre for Interdisciplinary Environmental and Social Research), Fram Centre (Centre for Climate and Environmental Research in the Arctic), HydroCen (Norwegian Research Centre for Hydropower Technology), and NorthWind (Norwegian Research Centre on Wind Energy).

NINA is present in the largest university cities in Norway. This contributes to strong research collaborations with universities and strengthens the possibility of recruiting excellent researchers.

NINA has project collaborations with research institutions in more than 30 countries in Europe, Africa, Asia, and America.

NINA is also a member of ALTER-Net (A Long-Term Biodiversity, Ecosystem, and Awareness Research Network) and ILTER (International Long Term Ecological Research network).

NINA's turnover 2024



NINA's key statistics for 2024

Number of employees	2024	2023
Total	351	335
- scientific staff	222	222
- women	45,0 %	43,6 %
- women in scientific positions	42,2 %	41,0 %
- women on doctoral programs	70 %	53,3 %

Number of employees (full-time equiv.)	2024	2023
Totalt	349	327

Number of publications	2024	2023
Scientific papers	290	307
NINA Reports	147	158
Media coverage	4 542	3273
News stories published at nina.no	137	114
Unique visitors to nina.no website	413 500	359 000
Followers at Facebook	16 000	14 000



**NINA head office**

Postal address:

P.O. Box 5685 Torgarden  
NO-7485 Trondheim, NORWAY

Visiting address:

Høgskoleringen 9, 7034 Trondheim

Phone: +47 73 80 14 00

E-mail: [firmapost@nina.no](mailto:firmapost@nina.no)

**NINA Oslo**

Sognsveien 68,

NO-0855 Oslo, NORWAY

Phone: +47 73 80 14 00

**NINA Tromsø**

Postal address:

Framsenteret, P.O. Box 6606 Langnes  
NO-9296 Tromsø, NORWAY

Visiting address:

Hjalmar Johansens gate 14, 9007 Tromsø

Phone: +47 77 75 04 00

**NINA Lillehammer**

Vormstuguvegen 40

NO-2624 Lillehammer, NORWAY

Phone: +47 73 80 14 00

**NINA Bergen**

Thormøhlens gate 55

NO-5006 Bergen, NORWAY

Phone: +47 73 80 14 00

**NINA Ims Research Station**

Ryfylkeveien 980

NO-4308 Sandnes, NORWAY

Phone: +47 73 80 14 00

ISSN 0809-8808

[www.nina.no](http://www.nina.no)

Photo front cover: Olav Strand, NINA. Photo back cover: Vegard Gundersen, NINA  
Editors: Norunn S. Myklebust and Randi Liljeleiren, NINA  
Graphic design/layout: Eva Setbaas, NINA



Norwegian Institute for Nature Research